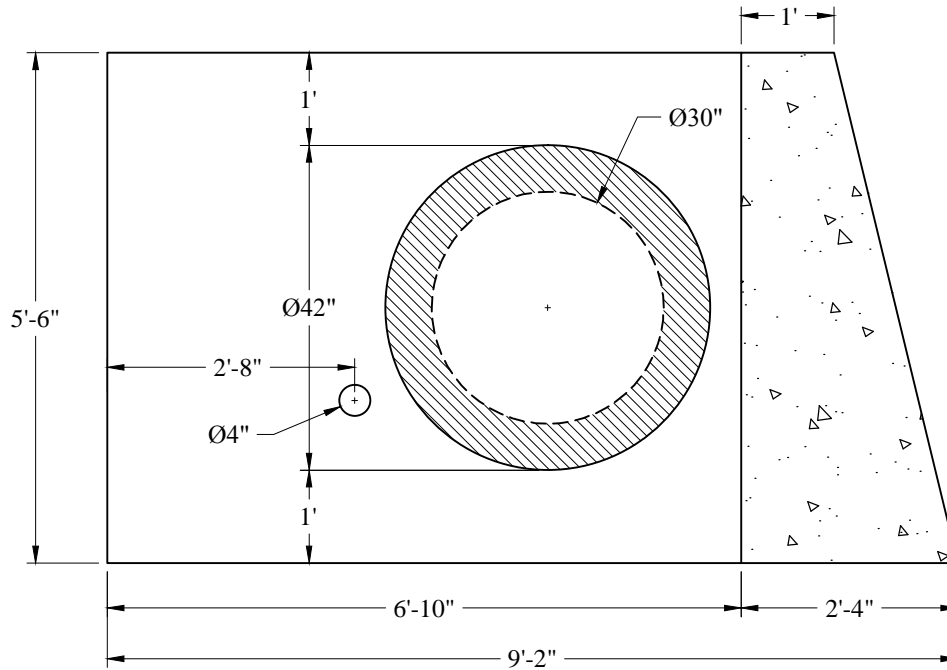
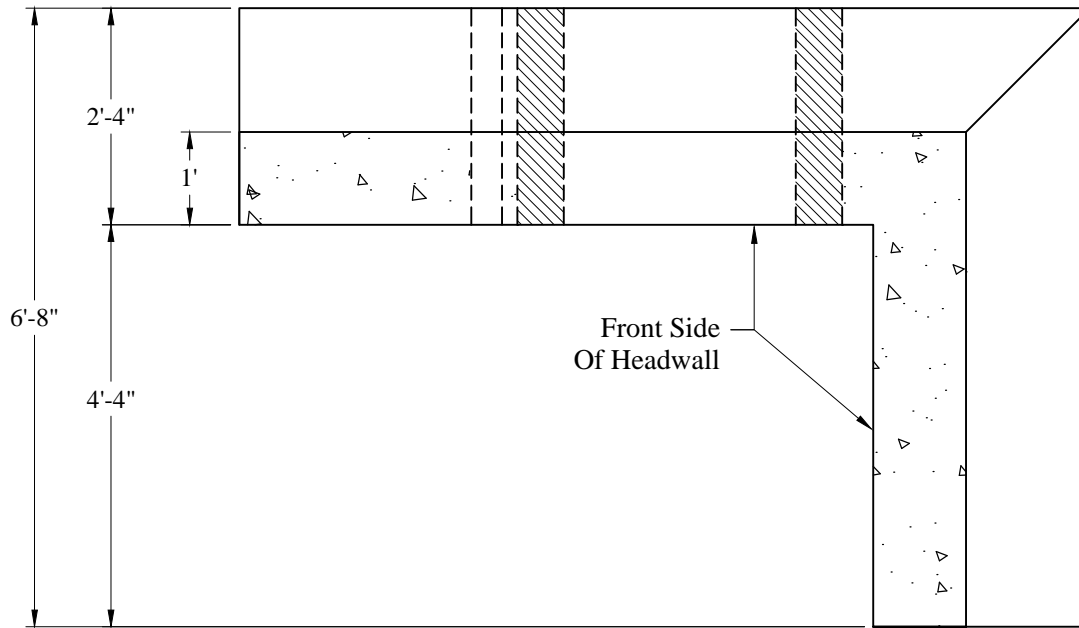


1-800-639-2199

Fax (603) 224-2927

Phoenix Precast Products Headwalls\Standard\DOT\L-Shaped\30in RCP L-Shaped\NHDOT Right (v)

Phoenix Precast Products



General Notes

1. Steel Reinforcement Conforms to Latest ASTM Specification: ASTM A-615 Grade 60 Black Deformed Bars
2. Concrete: $f_c = 5,000$ psi @ 28 Days Minimum
3. Est Weight: 18,000 Lbs

Phoenix
Precast
Products

N.H. DOT
30" RCP "L" Shaped
Headwall (Right)

P/N: HWL-30DOTR